



## CRYSTAL EMPIRE LED

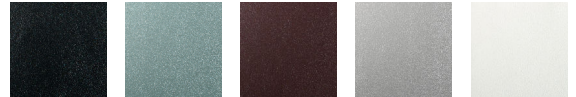
### SCE130D

Neoclassical in nature, this draped, leather chandelier's structure softens the room. Its smooth sheen is punctuated by an iconic Swarovski crystal ring. Its symmetry and proportionality call to those with a modern take and a penchant for history. Often discovered in spiral stairways or over formal dining tables.

### OPTIONS



Crystal Radiance (R), Crystals From Swarovski (S)



-LB1, -LI1, -LR1, -LS1, -LW1

## MORE CRYSTAL EMPIRE LED

SCE120D      SCE110D

### SPECIFICATIONS

Type:	Pendant
↔ Width/Length:	33.5in / 85cm
↕ Height:	44.5in / 113cm
↓ Chain Length:	144in / 366cm
⬇ Hang Weight:	107lbs / 48.2kg
Light Temperature:	3000K
Bulb Count:	20
Bulb Info:	(20) 3 MAX, LED*
Voltage:	110V / 220V

\*Bulb Included \*\*Bulb Not Included